



**CamSentry™**  
LOOKING OUT FOR YOU

## Quick Start Guide

### Common Terms Found on CamSentry's Website

**Reseller = You**

(Example: ABC Security Company)

**Client = Customer**

(Example: Mike's Bike Shop)

**User = Customer Login account**

(Example: The owner of Mike's Bike Shop)

### Equipment List

You will need the following equipment and information to complete the IP Video Device and Camera set up:

1. IP Video Device with included power supply, RCA cable (with BNC adapter) and CAT5 Cable
2. IP Video Setup CD-ROM
3. CamSentry approved analogue camera with camera power supply
4. Access to CamSentry website

### Step 1: Creating a New Client Login on [www.CamSentry.com](http://www.CamSentry.com)

Follow the simple steps below to create a new CamSentry user and to add cameras to that user account:

1. Go to [www.camsentry.com](http://www.camsentry.com) and click the Reseller Link. Log into your reseller account. (If you have not obtained your reseller Login information please contact CamSentry. We have provided a space below for your user name and a password hint.)

\_\_\_\_\_  
User Name

\_\_\_\_\_  
Password Hint

2. Once logged into your account click the link "Create new client."

- a. Enter a unique name for your Client (customer) without using spaces – underscore(\_), dash(-) and dot (.) characters are ok. Examples: mikes\_bike\_shop or mike.smith\_bikeshop.
  - b. Next enter a Label (Hint: this is where you can enter a more descriptive name to describe your Client (spaces are ok). This is the label that the Client will see when they Loginto the CamSentry website. Example: Mike’s Bike Shop in Moab.
  - c. Next Enter an FTP password for your customer. NOTE: This is the password that will be used to setup each and every camera for that customer. This password will be different for each client and should not be the same as your reseller password. (We suggest you use a password manager like Password Safe, available on the internet for low cost to record each client password in a secure place.)
  - d. Click the Create Button to finish.
3. Once you’ve created a new Client click on the link “Create Users.”
- a. Click the down arrow to select the type of user. (HINT: If this is the first Login account for this client or if you are only creating one Login account for this client select the Client Administrator option.
  - b. Next create a Login ID and Password for the new user. Write this information down and provide it to the Client. You should instruct your client to change their after initially logging in to their account.
  - c. Next include the Client’s First Name, Last Name, Email address, and phone number in the fields provided.
  - d. Click the Create Button to finish.
4. Next follow the helpful links to create camera(s) for the new Client.
- a. Enter Camera Name, label and description information in the fields provided.
    - i. Example:
      1. Name: Camera1 (no spaces allowed)
      2. Label: Front Door Camera (This is the label that will appear on the CamSentry Website. Spaces Allowed.)
      3. Description: Analog camera at front door of Mike’s bike shop (Detailed description information.)
  - b. The Upload Format, Timezone and Country Fields are pre-filled in and are the default settings and can be ignored or changed if needed.
  - c. The Live-View Settings can be left blank unless you want to set up a live view for your Client. Live View gives the Client the ability to Loginto CamSentry.com and view their location live. If you want to set up a live view input the :Public IP Address and Port number of the camera into the Host Field. Preset Number and Model setting can be ignored.
  - d. Click the Create button to finish.
5. You will now be presented with the information (FTP Username, FTP Password, FTP Server) needed to setup your IP Video Device. HINT: If running on the

same computer you will be able to copy and paste these three items directly into the Aviosys Quick Setup Application Window.

## Step 2: IP Video Device and Camera Setup

- 1) Using supplied RCA cable, connect one end to the specific IP Video Device port as shown in Figure 1. Attach the end with the BNC adapter to the analogue camera (if needed).



Figure 1

- 2) Connect the analogue camera to its power supply and ensure that it is plugged into a power outlet.
- 3) Connect the Cat5 cable from your network router or switch into the CAT5 jack located on the IP Video Device.
- 4) Connect the power supply for the IP Video Device. Insert the power input below as show in Figure 2.



Figure 2

- 5) Turn IP Video Device power on by sliding switch to toward CAT5 input. See Figure 3. If you have valid network connection you should see a yellow and a green light on the IP Video Device.



Figure 3

- 6) Insert IP Video Installation CD-ROM. Autorun will load the CamSentry – Aviosys Quick Setup Application as show in Figure 4. If the program does not load automatically then open My Computer and right mouse click on your CD

Drive letter and click Explore then double click on the AviosysQuickSetup.exe file.



Figure 4

- 7) If everything is connected properly you should now see a Camera IP address appear in the application Window as shown in figure 4 above (Example above is IP address: 192.168.15.102). Click once on the IP address that appears in the window. You should now see active video images in the application as in Figure 5 below.

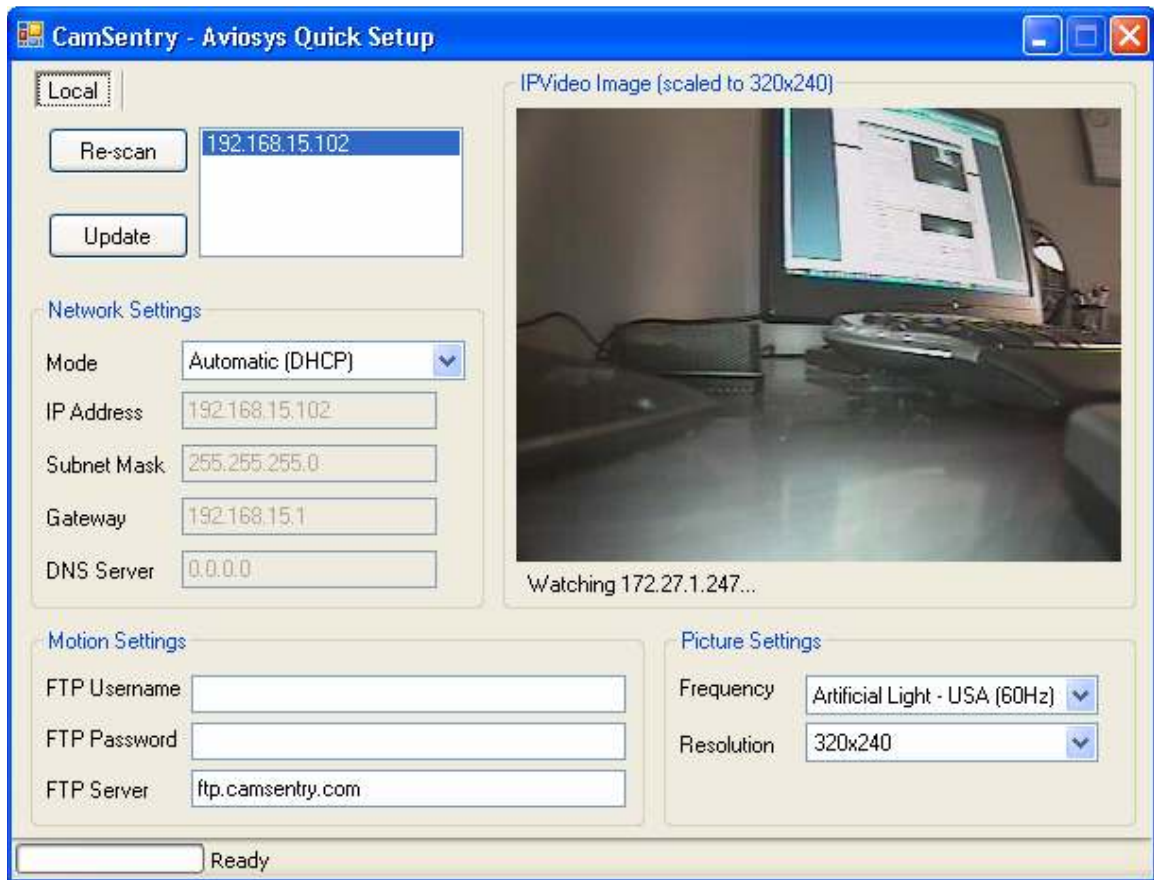


Figure 5

- 8) Set resolution (320X240 recommended).
- 9) Enter the Client's FTP Username and password in the fields provided. This MUST match the user name and password that you just generated on the CamSentry Website. The username and password are CASE SENSITIVE.
- 10) Click on the Update Button at the top of the configuration page to save your settings.

Congratulations!! You have now successfully completed setup and configuration of the IP Video Device. You are now ready to go to [www.camsentry.com](http://www.camsentry.com), and Loginto your Client's account with the Client's Login and password and view archived video. At this point simply setup the pre-configured IP Video Device at your client's location and they are ready to start viewing video surveillance.